

# GRAPEVINE



## OGEG I GEG

### AUGUST 2024



#### **Supported by the Victoria Hall Centenary Committee**

**Please send contributions for inclusion by the 15<sup>th</sup> to:**

**Ainsley on 01591 610487**

**E-mail: [ainsley@grape-vine.org.uk](mailto:ainsley@grape-vine.org.uk)  
or Lindsay**

**E-mail: [Lindsay@grape-vine.org.uk](mailto:Lindsay@grape-vine.org.uk)**

**Or leave at the Neuadd Arms clearly marked with your  
name and telephone number.**

**Owing to difficulties in collecting payments, we now require that any  
'one-off' adverts must be paid for in advance to be included.**

**Grapevine can be viewed online by following the link at  
[victoriahall-llanwrtydwells.co.uk/grapevine](http://victoriahall-llanwrtydwells.co.uk/grapevine)**



# **HERE'S MY VOICE**

**VICTORIA HALL**

**EVERY THURSDAY**

**10:30AM – 12:30PM**

This group is for people who love to sing

Doesn't matter whether you can sing in tune or not

♪ You are all welcome

Come along and have a try

Feel the benefits of singing

The positive energy and release of negativity

Tea and Coffee and a natter afterwards

Donation funded

♪ No need to book, just turn up!

# AUGUST DIARY 2024

3	Welsh Open Stone Skimming Championships, Abernant Lake
3	D Day Charity Concert, Strand Hall Builth Wells. 2pm
3	Llanwrtyd Sheepdog Trials.
17	Llanwrtyd Wells & District Show, Ffos Fields
18	Strawberry Tea in the Show Marquee
20	Community Lunch, St. James' Church. 12.30pm
22	Llanwrtyd in Bloom Prize Giving, The Station. 3pm
24	Mini Bogathlon, Waen Rhydd, from 10am. Also Mountain Bike Bogsnoorkelling, Belly Flopping and Plank Race.
25	World Bogsnoorkelling Championships, Waen Rhydd. From 10am. Also Wife Carrying, Husband Dragging, Ditch Race and Kid's Bogsnoorkelling.

## And In September

4	Singing Group in Victoria Hall, 10.30 am – 12.30 pm
14	Festival Committee Race Night, Victoria Hall. 6pm
18-21	Mid Wales Four Day Walking Festival
24	Community Lunch, St. James' Church. 12.30pm
28	Llanwrtyd Eisteddfod, Victoria Hall.

### Weekly Activities in The Bromsgrove Hall

Monday	Table Tennis	7pm – 9pm
Thursday	Badminton (£2.50 per person)	7pm – 9pm

**PLEASE NOTE THE NEW CUT-OFF DATE FOR SUBMISSION OF ADVERTS OR ARTICLES. ITEMS NOW NEED TO BE WITH US BY THE 15<sup>TH</sup> OF THE MONTH, NOT THE 20<sup>TH</sup> AS PREVIOUSLY.**



# THE DROVERS REST RESTAURANT

Dolycoed Road, Llanwrtyd Wells

Phone Peter James MBE

01591 610264 or 610563    [www.food-food-](http://www.food-food-)

foc



Awards Gwobrau

True Taste  
Hospitality Bronze  
award 2003-4



Awards Gwobrau

True Taste Dining Out  
2004 Bronze

Accommodation Available  
Gourmet Licensed Restaurant  
Private functions catered for  
Lunches – Teas – Dinners

FOR LUNCHES AND EVENING DINNERS  
PLEASE PRE BOOK ESSENTIAL

TEL: 01591 610264



Green Tourism  
Business Scheme  
Gold Award



## CAMBRIAN ARCHERS



### BEGINNERS ARCHERY COURSE

The Cambrian Archers are now able to offer Beginners Archery courses with qualified Instructors.

Each course consists of three half-day sessions for which all necessary equipment will be supplied.

Courses start on the 28th of July, the 4th of August and the 11th of August. The cost for the full course is £45.

For further information contact [cambrianarchers@outlook.com](mailto:cambrianarchers@outlook.com)  
Or find us on Facebook.



## Summer update.

We've had a few very busy months. With the Bute energy statutory consultations happening in the three villages near Radnor Forest, local community meetings, a drop-in session to support everyone and a fantastic meeting in the Metropole there was not a dull moment. The statutory consultations raised more questions than were answered and RE-think was there to support and provide facts taken from Bute's documentation. Many people attended, contacted us for information and wrote to Bute with their concerns. RE-think also made sure that local and national representatives were made aware of our concerns about the impact the large-scale industrialisation proposed by Bute energy on the environment, the countryside and local wildlife and businesses.

We are now waiting for Bute's announcement of the planning application, which they expect will happen late summer '24. More raising concerns and writing to do! Green-gen meanwhile have been granted the license for the pylon and power lines with some modifications by OFGEM. Anyone who is contacted or receives a letter and is concerned, please get in touch with your local action group for support. But all is not lost! The Green-gen Towy-Usk line only becomes necessary if the wind energy parks that parent company Bute Energy proposes to build around Builth Wells are granted permission. We need to stop Bute Energy by showing that their project does nothing for Wales other than destroying the countryside, communities and wildlife.

And finally, some positive news. During a recent Powys County Council meeting councillors shared RE-think's view that using less energy and local energy generation and storage needs to be considered more and that the energy generated in Powys to be exported elsewhere (like the proposals by Bute energy) are a concern.

Keep informed by going to [www.rethink.wales](http://www.rethink.wales)



# **Bogsnorkelling World Championships**



---

**August Bank Holiday Saturday  
24th**

## **The Bogathlon**

**Bogging 3-ways : a mini sprint triathlon**  
**Registration 10am**

**MTB Bog Cycle, Belly Flopping, Plank Race**

---

**August Bank Holiday Sunday 25th**  
**The Main Event**

**Registration from 9.30am**  
**Children's Bogsnorkelling, Ditch Race,**  
**Wife Carrying, Husband Dragging**  
**Bar, food, coffee, icecream**  
**live music, family fun**

---

**Waen Rhydd Bog, Llanwrtyd Wells, Powys, Wales**  
**Follow the frog to the bog**  
**[www.green-events.co.uk](http://www.green-events.co.uk)**



## **GroWet - River Irfon Catchment project**

<https://freshwaterhabitats.org.uk/projects/irfon/>

The Irfon catchment in Mid-Wales is a Special Area of Conservation designated for its exceptional freshwater biodiversity, which includes one of the few remaining UK Freshwater Pearl Mussel populations. Sadly, exposure to multiple pressures means the catchment is currently failing to meet Habitats Directive and Water Framework Directive targets.

This is the first project in Wales to cover all aspects of the freshwater and wetland environment, including ponds. It focuses on the River Irfon, which stretches from Abergwesyn to Builth Wells, and its tributaries and floodplains and associated ponds and wetlands.

Freshwater Habitats Trust has been working in the Irfon catchment since 2018, building on work that began in mid-Wales in the mid 2000s as part of the People, Ponds and Water project supported by the Heritage Lottery Fund. Through its Welsh Government funded Irfon Catchment Resilient Freshwater Habitats project, the charity has worked with local landowners and communities to monitor water quality and carry out species monitoring.



### **Illustrating wetland plants**

The **GroWet** River Irfon Catchment Project plans to observe, grow and illustrate key wetland plant species to enhance our knowledge of the ecosystem and to raise more awareness of its importance to our wetland environment.

Caroline Holley will be running a short workshop in botanical illustration based on wetland plants in the field between Kilsby House and the River Irfon. The purpose is to encourage close observation of endangered species in their natural habitats and the event will involve simple observational drawing, pen and ink and watercolour sketches of the plants in situ. Materials and light refreshments will be provided.

DATE Monday 12<sup>th</sup> August 2024. 10-1pm

MEET at Kilsby House, Abergwesyn Road, Llanwrtyd Wells, LD5 4TL

The event is free and funded by the Freshwater Habitat Trust. It is open to adults (16+) but spaces are limited and you must book in advance. For further details and booking ring Caroline Holley on 01591 610126.





Funded by  
UK Government



# Cooking Counts

**Interested in  
improving your  
numeracy through  
cooking?**

**FREE  
COURSE**

Cooking Counts is for anyone over the age of 19 who would like to explore their cooking skills whilst improving their confidence in basic numeracy skills required in the kitchen.

For more information and registration use the QR code,  
[healthprotection@powys.gov.uk](mailto:healthprotection@powys.gov.uk)  
or 'phone 01597 827306



**Powys**



**GIG  
CYMRU  
NHS  
WALES**

Bwrdd Iechyd  
Addysgu Powys  
Powys Teaching  
Health Board

POWERED BY

**LEVELLING  
UP**



# RACE NIGHT

YELLOWSTONE ★ COWBOY THEMED

SATURDAY 14 TH SEPTEMBER

Limited Tickets Available

BAR, FOOD, GAMES ★ DOORS OPEN 6:00PM

*Run by Llanwrtyd Wells Festival Committee*

To be held at Victoria Hall, Llanwrtyd Wells  
Tickets £20 to include Buffet and welcome drink  
Available from Festival Committee members,  
by email: [llanwrtydfestival@yahoo.com](mailto:llanwrtydfestival@yahoo.com)  
and via Llanwrtyd Festival page on Face Book

# Charity Concert

In aid of Builth Wells  
Community  
Support



In memory of Violette Szabo and D DAY.

**August 3rd 2024, 2pm**

Strand Hall, Builth, £10 on the door.

Surrey Police Band,  
Steve & Sue Mace (Dancers) and Vintage Class Singers.  
Soprano: Lauren Elizabeth Williams

TICKETS AVAILABLE

BUILTH

5 PPOET

LE W



# Llanwrtyd Wells Tourism and Trade Association



Test your general knowledge in a fun and informal **evening** of **trivia** as you compete against your fellow quizzers.

Quiz set by **Tony Price**

When : **Thursday 22<sup>nd</sup> August**

Where : **Neuadd Arms Llanwrtyd Wells**

Time : **7pm**

Teams of four - £1.50 per person

Raffle and Auction

All funds raised will go to support the E-Bikes Scheme for Llanwrtyd Wells



# Community Lunch

at St. James's Church,

Llanwrtyd Wells

Tuesday August 20<sup>th</sup>

12.30pm



*Everyone welcome for food and friendship*

Two course lunch with Vegetarian option

Tea/coffee included - £6 per head

For more info or home delivery ring

01591 610028 or 01591 217901



# **Llanwrtyd Wells & District Show**



**Saturday 17<sup>th</sup> August 2024**

**at Ffos Fields LD5 4RS**

(By kind permission of Mrs M Williams)

**ADMISSION: Adults - £5.00**

**Children under 16 - £1.00**

**Under 5's Free**

## **Qualifying Dog Show**

Show schedules available at local shops

Judging commences 12 noon

Secretary: Sian Evans

Email: [siane1@live.com](mailto:siane1@live.com)

## **Sheepdog Trials Saturday 3<sup>rd</sup> August**

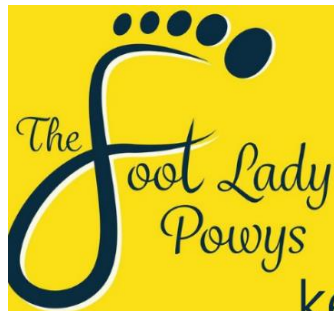
### **Strawberry Tea**

**at Show Marquee – 3pm**

**Sunday 18<sup>th</sup> August**







Your local  
NMC registered foot  
health practitioner,  
keeping your feet neat!

- Diabetic Foot Care
- Dressings & Orthoses
- Fungal Nail Treatment Course
- Ingrowing Nail Treatment
- Management of Calluses & Corns
- Nail Maintenance
- Plantar Fasciitis Treatment
- Thickened Nail Treatment
- Verruca Treatment Course

Telephone: 01597 821 072

E-mail: [thefootladypowys@yahoo.com](mailto:thefootladypowys@yahoo.com)

Website: [www.thefootladypowys.co.uk](http://www.thefootladypowys.co.uk)



[thefootladypowys](https://www.thefootladypowys.co.uk)



[footladypowys](https://twitter.com/footladypowys)





# **Llanwrtyd In Bloom 2024 Results**

## **Highly Commended**

**Virginia Evans**, Noddfa, Belle View Terrace. Creative and maximized use of small space. Absolute delight.

**Bunty Price**, Epynt View, Irfon Crescent. Traditional gardening at its best with small areas of lawn with herbaceous borders. Exceptionally well maintained dotted with cherished ornaments from family members.

## **Category Winners**

### **Flower Garden:**

1<sup>st</sup>: Ainsley and Elfred Jones, Llandovery Road.

2<sup>nd</sup>: Jean Knee, 21 Erw Huf

### **Veg Garden:**

1<sup>st</sup>: Mo and Ken Burton, Stonehaven, Dolycoed Road.

2<sup>nd</sup>: Dolwen Committee, Dolwen Fields.

### **Frontal Display:**

1<sup>st</sup>: Allen and Sam Kuhn, Riverside Cottage.

2<sup>nd</sup>: Kim Jackson, Britannia Cottage, Riverside.

### **Business:**

1<sup>st</sup>: Friends of Station, Llanwrytd Rail Station.

2<sup>nd</sup>: June Duncan, New Hall.

### **Wildlife Friendly:**

1<sup>st</sup>: Kate and Ceri Jones, Chapel House.

2<sup>nd</sup>: Bernice Benton, Cerdyn Villa

### **Pot Garden:**

1<sup>st</sup>: Kim Jackson, Britannia Cottage, Riverside.

2<sup>nd</sup>: Kate and Ceri Jones, Chapel House.



## *Llanwrtyd's Beautiful Gardens*

The sun shone on this year's Llanwrtyd in Bloom competition judging day, and as ever Llanwrtyd's gardens looked lovely. Our judge, Stephanie Morgan, with NGS garden Garregllwyd in Nantmel, was most impressed with the gardens entered and many others that we passed walking through town.

Llanwrtyd community gardens on the Square, Dolwen Fields, Rail Station and Memorial Garden continue to be a picturesque asset to the town, as do the town boxes, although some are in need of repair. Summer planting by the Wales in Bloom team is a great addition to the colour and beauty. Many thanks to all the volunteers who keep Llanwrtyd looking beautiful and to all who help us raise funds for planters and plants. A big thank you to the Festival Committee and Welsh Tractor Road Run who have both provided a grant of £250 this year.

Prizes for Llanwrtyd in Bloom and the Walter's Cup will be presented at the Station Tea on Sunday 22<sup>nd</sup> September at 3pm.



## Llanwrtyd Wells Play Park Project Questionnaire:

We are in the process of applying for funding to improve the play area in the Dolwen Field. We would appreciate the input of local children and their parents/guardians/other family members to assist us in our applications. Completed forms can be dropped off at the LWAS Garage, Llanwrtyd Wells, or email responses to: [wcplayparkproject@gmail.com](mailto:wcplayparkproject@gmail.com).

- How often do you use the play area?  
Daily    Weekly    Monthly    Annually    Never    Other \_\_\_\_\_
- What are the barriers to you using or accessing the play area?
- Would you use it more often if it was refurbished?  
Yes                  No
- What would you prioritise in the refurbishment of the play area?  
Fencing    Flooring    Play Equipment    Other \_\_\_\_\_
- Question for children. If you could choose one thing for the play area what would it be? (Drawings welcomed on the back of the form!)
- Any other comments or suggestions welcomed. Thank you





1 Groe street Builth Wells LD2 3DW  
01982 553004 info@builthcs.co.uk  
Registered Charity 1150452  
Company limited by Guarantee 0827866

Builth Wells Community Support is excited to announce the provision of a new Home Support service for the Builth & Llanwrtyd Locality area. Funding has been awarded by Powys County Council to deliver this service

Home Support is an early intervention and prevention service, helping individuals to live at home with confidence, in good health, independently and safely. Services are free and available to those over the age of 50.

Some of the things Home Support can help with include:

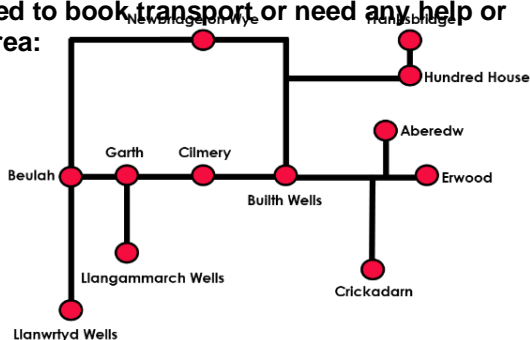
- Care line responders 24/7/365
- Proactive wellbeing checks
- Promotion of independence, wellbeing and healthy lifestyles
- Practical support
- Assist carers with their role
- Temporary personal and domestic support
- Signposting, referral and help to access local community groups and other support.

**Contact details: 01982 553647 [homesupport@builthcs.co.uk](mailto:homesupport@builthcs.co.uk)**

Builth Wells Community Support will continue to deliver their established services:

- Shopping and prescription delivery service
- Community Transport
- Community Lunch Club
- Information and Signposting

**Please contact us if you need to book transport or need any help or information. Membership area:**





## **Llanwrtyd Wells Community Transport (LWCT)**

LWCT provides a personal service to all our members requiring individual transport facilities to take them to medical appointments, shopping, taking much loved pets for treatment, taking them to visit friends and relatives and any other journey they would like to make. We also have a dedicated shopping service where we can shop for people who are unable to manage a trip to the shops themselves. Members can place their shopping order and our drivers shop and deliver. We can also collect and deliver prescriptions, pre ordered take away food, and offer assisted transport for whatever reason it is needed.

We have a disabled access vehicle making our service available to everyone. We make a point of assisting any member or business we can where based in our locality. We cover Llanwrtyd Wells, Abergwesyn, Cefn Gorwydd, Tirabad, Llangammarch Wells, Cilmeri, Beulah, Garth and Llandrindod Wells and all surrounding villages.

The volunteers who cover our Volunteer Drivers Scheme either use their own car or ones belonging to LWCT. We also have a small fleet of minibuses available for hire by local community groups and other charities and not for profit organisations. These can be hired either with or without a driver, as long as conditions of hire are met.

LWCT is always happy to welcome enquiries about transport, if we can't help, we can signpost you to someone that can. We are also always happy to welcome new volunteers into the team, whether you want to become a driver, help with administrative duties or anything in between. Members, volunteers and paid staff are the heart of LWCT and by joining us you become part of a family.



To enquire about our services please call Laura Burns, General Manager on 01982 552727 or for shopping John McMahon, Volunteer Driver on 07904 816521. Our address is: Lion Garage, Castle Street, Builth Wells LD2 3BN, our email address is [office@lwct.org.uk](mailto:office@lwct.org.uk) and our website at [www.lwct.org.uk](http://www.lwct.org.uk)





## **JAMIE'S SCHOOL OF MOTORING**

- ✓ Intensive Courses
- ✓ Driving Lessons
- ✓ Motorway Training
- ✓ Night Driving
- ✓ City Driving
- ✓ Refresher Courses

 **JSM**  **07584092447**  
**jamesgibson793@gmail.com**

Looking for driving lessons? I cover the following areas  
Llanwrtyd Wells, Llandrindod Wells, Builth Wells and  
Surrounding Areas.

**DVSA approved instructor and fully insured**



## POWYS NATIONAL GARDEN SCHEME

Did you visit the Royal Welsh Show and find among the ten Micro Show Gardens a yellow National Garden Scheme sign and the small yellow signs giving 'sound bites' of information about how the NGS supports nursing and health care charities? If you have a garden you would like to share with others, live in a village, hamlet or road where three or four of you have gardens you think others might like to visit, please contact Susan Paynton, Regional Chair Wales and the Marches, 01686 650531 or [susan.paynton@ngs.org.uk](mailto:susan.paynton@ngs.org.uk)

I listened to BBC Radio 4's Just One Thing - with Michael Mosley when he spoke to Dr Edith Chen. Her studies show that by boosting your mood and empathy, volunteering can lower chronic inflammation, cholesterol and even help you lose weight. It's also a great way to meet new people! Our success would not be possible without the dedicated support of the charity's garden owners and its volunteers. Volunteers take on a number of roles from county organisers and treasurers to publicity and social media support, each one ensuring the smooth running of National Garden Scheme openings. If you would like to volunteer, please contact Susan Paynton, details above. Or meet a volunteer at a garden opening:

### August

Date	Time	Admission	Garden
Thur 1	2-5pm	£5	Gilwern Barn, Beulah LD5 4YG. Pre-booking essential
Fri 2	10-4pm	£5	Welsh Lavender, Cefnperfedd Uchaf, Maesmynis, Builth Wells LD2 3HU Pre- booking essential
Sun 4	12-5pm	£7	Bryngwyn Hall, Bwlch-y-Cibau, Llanfyllin SY22 5LJ
Sun 4	2-5pm	£4	The Meadows, Carno Road, Caersws SY17 5JA
Sat 17 & Sun 18	11-5pm	Six gardens combined admission £6	Llanidloes Gardens, map and tickets at Compton's Yard Great Oak Street and The Hanging Gardens Bethel Street, Llanidloes
Sun 18 Aug	2-5pm	£5	Brookside, Llanbister, Llandrindod Wells LD1 6TW
Sat 31 Aug, Sun 1 Sept	11.30- 5pm	£5	Aberangell, Old Coach House, Dolcorsllwyn, Machynlleth SY20 9AB

## September

Date	Time	Admission	Garden
Sun 1 Sept	11.30-5pm	£5	Aberangell, Old Coach House, Dolcorsllwyn, Machynlleth SY20 9AB
Thurs 5 Sept	2-5pm	£5	Gilwern Barn, Beulah LD5 4YG. Pre-booking essential
Sat 7 to Sun 15 Sept	11-5pm	£6	The Hymns, Walton, Presteigne LD8 2RA.
Sun 8 Sept	2-5pm	£6	Cwmweeg, Dolfor, Newtown SY16 4AT
Sun 8 Sept	11-5pm	£5	Eve's Garden, The Old Stackyard, Cefn y-coed, Llansantffraid SY22 6TB
Sun 23 Sept	12-5pm	£5	Willowbrook, Knighton Road, Presteigne

For more information visit [ngs.org.uk](http://ngs.org.uk)



## THE TROUT INN BEULAH

Dave & Heather Saunders  
Beulah, Llanwrtyd Wells  
Powys LD5 4TA

Tel: 01591 620235    Mobile: 07800 759551

**\*\* A WARM WELCOME \*\***

**\*\* GOOD FOOD \*\***

**\*\* B & B \*\***

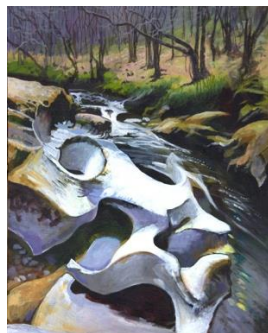


**Llanwrtyd & District Heritage & Arts Centre**

## **Creativity inspired by Nature**

**We welcome new artists and ceramicist to  
the galleries in August.**

**Artists from the Llandrindod Art Club display a variety  
of paintings and mixed media work and pottery is  
provided by Stone Hen Ceramics**



**OPEN THURS-SUN 10am to 4pm and Bank Holidays**

## Church Services in August 2024

St James Llanwrtyd **11.00 am**; Eglwys Oen Duw, Beulah **9.30 am**  
St Cadmarch, Llangammarch **9.30 am** and Llanlleonfel Garth **11.15 am**

<b>Sunday 4<sup>th</sup></b> Eglwys Oen Duw, Beulah St James Llanlleonfel, Garth	9.30 am 11.00 am 11.15 am	Holy Communion Family Service Holy Communion
<b>Sunday 11<sup>th</sup></b> St Cadmarch, Llangammarch Eglwys Oen Duw, Beulah St James	9.30 am 9.30 am 11.00 am	Morning Prayer Morning Prayer Holy Communion
<b>Sunday 18<sup>th</sup></b> Eglwys Oen Duw, Beulah St James, Llanwrtyd	9.30 am 11.00 am	Holy Communion Morning Prayer
<b>Sunday 25<sup>th</sup></b> St Cadmarch, Llangammarch Eglwys Oen Duw, Beulah St David's Old Parish Church	9.20 am 9.30 am 11.00 am	Holy Communion Morning Prayer Holy Communion
<b>Sunday 1<sup>st</sup> September</b> Eglwys Oen Duw, Beulah St James <b>St David's Old Parish Church</b>	9.30 am 11.00 am <b>4.00 pm</b>	Holy Communion Family Service <b>Hymns and Pimms</b>

## **ALUN WILLIAMS**

**Carpet Fitter & Supplier**  
**Gwasanaeth gosod a gwerthu**  
**carpedi.**

**Carpets fitted old, new or**  
**second hand.**

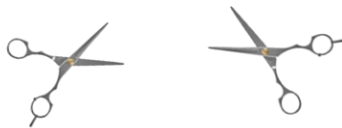
**Hen, ail neu newydd.**

**All types of floor covering fitted:**  
**carpets, vinyl, cushion floor,**  
**underlays, etc. to suit all**  
**budgets.**

**I can also fit any floor covering**  
**supplied by you, with regular**  
**visits to Llanwrtyd and**  
**surrounding area.**

**Home selection service available.**

**Call Alun to arrange a visit.**  
**Tel: 01558 650364**



## **QUALITY** **HAIRDRESSING**

**In the comfort of your**  
**own home**

**Contact Sarah**  
**for a consultation or**  
**appointment**

**Tel: 07841 080282**  
**Email: saratovey@aol.com**

## **S J Amor** **Carpenter** **& Joiner**



**For all your purpose**  
**made joinery**  
**doors, windows, etc.**  
**Tel: 01591 610624**

## **Llanwrtyd Wells** **Heritage Centre**



**Have you an hour or two**  
**you can spare each week?**

**Volunteers needed,**

**If you can help out, please**  
**contact Lynne Brooks by**  
**telephoning 01591**  
**610067/email:**  
**ldhac2016@gmail.com**





## Are you looking for a rewarding career in social care?

If so, we'd love you to come and join our team!

We have roles available across Llanwrtyd Wells, Cwmllynfell, Gwaun-Cae-Gurwen and Carmarthen. In this role you will support people with their daily lives so no two days will be the same.

Experience in care is not essential however, a passion for ensuring everyone we support have fun and fulfilled lives is. We provide an excellent induction and sector leading training program as well as supporting you through your QCF in Health and Social Care!

Call our recruitment line on: 0300 124 0177

Apply online at: [www.accomplish-group.co.uk/careers](http://www.accomplish-group.co.uk/careers)

Accomplish is an equal opportunities employer.

HealthInvestor  
Awards 2019   
Finalist

  
**accomplish.**  
make every day amazing

# Llanwrtyd Wells Auto Services

Beulah Road, Llanwrtyd Wells, Powys. LD5 4RF

Tel: 01591 610259

Shop open 7.00am – 9.00pm Monday to Saturday  
and open 9.30 am – 7.00 pm Sunday

Post Office open 7.00 am – 12 Noon Monday to Friday  
Closed Saturday and Sunday



Come and visit our "One Stop Shop" for friendly service  
and some great deals including:

**\*\*\* Free ATM services at Post Office Counter \*\*\***

"Unleaded and Diesel fuel supplied by Oil 4 Wales"

Vehicle Accessories/Oils

Coal/Gas/Wood

Newspapers/Magazines/Greetings Cards

Groceries/Fresh Dairy Products/Meat/Fish

Fruit and Veg/Bread and Cakes

Hot Takeaway Drinks

Household/Cleaning Items

Alcohol

Pet Foods

# **www.charl.co.uk**

## **Carpentry & Building Contractor**

**For full list of services visit our new website [www.charl.co.uk](http://www.charl.co.uk)**

**Tel: 07787168121**

email : [charlcarpentry@yahoo.co.uk](mailto:charlcarpentry@yahoo.co.uk)



Find us on  
**Facebook**

### **S. T. HOME IMPROVEMENTS**

We offer a complete Roofing and Building Service

Kitchens	✕	Bathrooms
Alterations	✕	Carpentry
Drainage	✕	Groundworks
Brickwork	✕	Stonework
Plastering	✕	Exterior Painting
Exterior Cladding		

Please contact Stewart for Free Quotes and Advice

Tel: 01597 860268 or 07841 842824

Email: [stewthompson1989@icloud.com](mailto:stewthompson1989@icloud.com)

# Phone, Tablet and Computer Repairs

We can repair most makes of device with various faults, including:

- not charging and charge port replacement
- not powering on
- no display
- screen damaged
- no touch

We can also repair game consoles and smart TVs.

All repairs are covered by a 90-day warranty.

Call to discuss your problem and to arrange a pick-up:

**01591 610402**

**07387 915040**



**Leawell Technology Ltd.**



## Tree Surgery & Garden Specialist

- Tree Removals (Dangerous / Hazardous)
- Tree Trimming • Stump Removal
- 24/7 Emergency Call Outs
- Site Clearance • Grass Cutting
- All Aspects of Hedge Work • Wood Chipping
- Mini Digger & Operator Hire • Log Splitting • Firewood & Many More

**Free No Obligation Quotes**  
**Insured & Qualified**

**Phone: 07809 674855**

**Email: [sbtreeguy@hotmail.com](mailto:sbtreeguy@hotmail.com)**

**[www.sbtreecare.co.uk](http://www.sbtreecare.co.uk)**

# VE DAY 80 CELEBRATIONS 2025

On the 8<sup>th</sup> May 1945 the guns fell silent and signalled the end of WW2

Next year, it will be 80 years since this happened.  
How would you like Llanwrtyd Wells to celebrate this occasion.

The dates we are looking at are:

- the early May Bank holiday on the 5<sup>th</sup> May 2025
- a late afternoon event on Thursday 8<sup>th</sup> May 2025
- Saturday 10<sup>th</sup> or Sunday 11<sup>th</sup> May 2025

Let us know your thoughts on how to celebrate this day  
by email to [lwtcclerk@gmail.com](mailto:lwtcclerk@gmail.com)



## Bus Departure Times Service 48

	Monday to Friday						Saturday			
Llandrindod		08:15	12:05	14:05	15:40		08:15	12:05	14:05	16:25
Howey		08:22	12:12	14:12	15:47		08:22	12:12	14:12	16:32
Builth Wells	06:53	08:43	12:31	14:48	15:59	16:48	08:43	12:31	14:48	16:48
Cilmery	07:00	08:50	12:40	14:55		16:55	08:50	12:40	14:55	16:55
Garth	07:06	08:56	12:46	15:01		17:01	08:56	12:46	15:01	17:01
Llangamarch	07:10	09:00	12:50	15:05		17:05	09:00	12:50	15:05	17:05
Cefn Gorwydd	07:15	09:05	12:55	15:10		17:10	09:05	12:55	15:10	17:10
Llanwrtyd	07:21	09:11	13:01	15:16		17:16	09:11	13:01	15:16	17:16
Beulah	07:28	09:18	13:08	15:23		17:23	09:18	13:08	15:23	17:23
Garth	07:33	09:23	13:13	15:28		17:28	09:23	13:13	15:28	17:28
Cilmery	07:39	09:29	13:19	15:34		17:34	09:29	13:19	15:34	17:34
Builth Wells	07:44	09:38	13:38	15:43		17:43	09:38	13:38	15:43	17:43
Howey		09:49	13:49	15:54		17:54	09:49	13:49	15:54	17:54
Llandrindod		09:59	13:59	16:01		18:01	09:59	13:59	16:01	18:01

### Llanwrtyd Surgery

There is no longer a receptionist based in Llanwrtyd Wells Medical Centre. For medical services it is now necessary to phone Builth Wells Group Medical Centre on 01982 552207

Open Monday – Friday 8.30am to 6.00pm



**POLICE CONTACT  
NUMBER**

**When it's less urgent than 999**

### Pharmacy Times at Llanwrtyd Surgery

Monday, Wednesday, Friday

9am – 1pm, 1.30pm – 5pm

Tuesday, Thursday

9am – 1pm, (Half Day)

Saturday/Sunday – Closed

**Tel: 01591 610308**

### Llanwrtyd Library Tel: 01591 610657

Tuesday 10am-12.30pm, 2-4.30pm

Wednesday & Friday 10am-12.30pm

Saturday 10am-12noon

## Heart of Wales Line Train Services (2<sup>nd</sup> June - 14<sup>th</sup> December 2024)

Departures	Monday - Friday					Saturday					Sunday	
Shrewsbury	05:22	08:57	11:22	15:17	18:08	05:30	08:56	11:26	15:25	18:08	12:04	16:20
Llandrindod	07:06	10:29	12:56	17:06	19:45	07:08	10:28	12:59	17:06	19:40	13:53	18:05
Llanwrtyd	07:41	11:03	13:41	17:37	20:17	07:42	11:03	13:41	17:37	20:15	14:24	18:36
Llandovery	08:06	11:28	14:07	18:02	20:42	08:07	11:28	14:07	18:02	20:40	14:49	19:02
Llanelli	09:10	12:40	15:12	19:07	21:44	09:11	12:38	15:12	19:09	21:49	15:51	20:05
Swansea	09:33	13:04	15:37	19:32	22:07	09:34	13:01	15:37	19:32	22:12	16:13	20:26
Swansea	05:47	09:09	11:38	14:18	18:20	05:47	09:08	11:45	14:26	18:18	11:10	15:37
Llanelli	06:09	09:31	12:03	14:44	18:44	06:10	09:31	12:08	14:49	18:42	11:33	16:00
Llandovery	07:12	10:34	13:13	15:51	19:47	07:13	10:34	13:13	15:52	19:46	12:36	17:02
Llanwrtyd	07:40	11:03	13:42	16:17	20:19	07:42	11:03	13:42	16:17	20:15	13:01	17:27
Llandrindod	08:13	11:36	14:15	17:01	20:52	08:15	11:36	14:15	17:02	20:48	13:44	17:59
Shrewsbury	09:46	13:08	15:45	18:32	22:22	09:45	13:10	15:45	18:36	22:26	15:14	19:37